

The study of bronzes and other metals from the Acropolis traditionally has been overshadowed by the emphasis given to monuments of architecture and sculpture. This volume positions itself against this tradition by resuscitating discussion on the Acropolis bronzes. The introduction reflects on the history of the relevant scholarship vis-à-vis the life of the Acropolis bronzes in various collections in Greece and elsewhere. The six essays provide overviews, reinterpretations, and critical discussions as well as new methodological approaches to various aspects of the existing corpus. Harris Cline employs Actor-Network theory to showcase the intricate web of social relationships underlying the deposition of bronzes on the Acropolis. Makres and Scafuro detail their efforts to produce a new critical edition of the corpus of inscriptions on bronzes. Sowder Koch revisits the corpus of hydriai. Sarcone focuses on tripod-cauldrons whereas Papalexandrou discusses the corpus of griffin cauldrons. Karakitsou publishes a fascinating inscribed *phiale* recently retrieved from the southwestern entablature of the Parthenon.

☀ Amy Sowder Koch is associate professor of art history at Towson University in Baltimore, MD. She is an art historian and archaeologist, specializing in the study of ancient bronzes (particularly hydriai).

☀ Nassos Papalexandrou teaches at the University of Texas at Austin. His latest book is *Bronze Monsters and the Cultures of Wonder: Griffin Cauldrons in the Preclassical Mediterranean* (University of Texas Press, 2021).



Archaeological  
Institute  
of America



Selected Papers on Ancient Art and Architecture ☀ Volume 7

☀ SPAAA 7

Hephaistus on the Athenian Acropolis

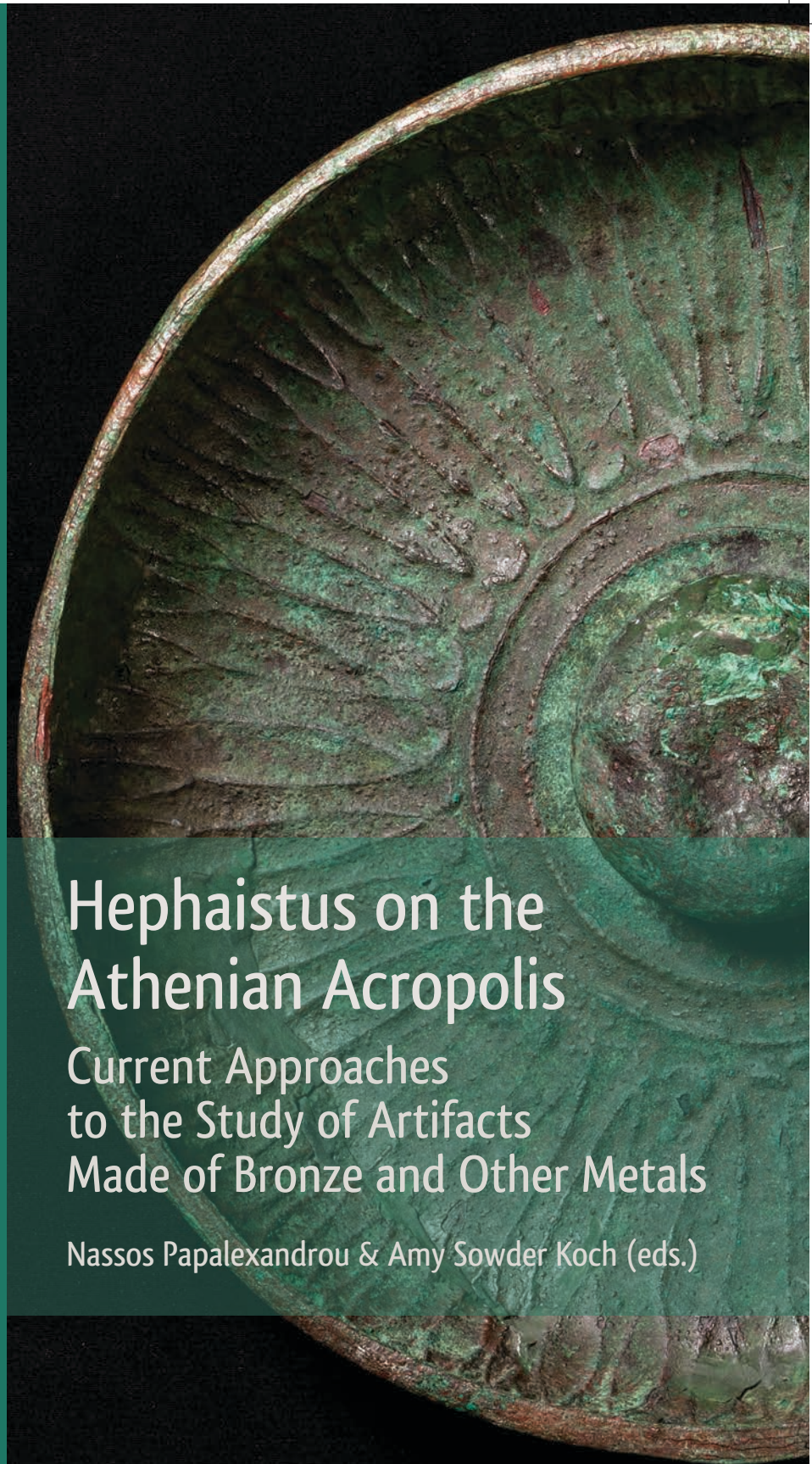
Papalexandrou & Sowder Koch (eds.)

AIA



Archaeological  
Institute of America

☀ Selected Papers on Ancient Art and Architecture ☀ Volume 7



# Hephaistus on the Athenian Acropolis

## Current Approaches to the Study of Artifacts Made of Bronze and Other Metals

Nassos Papalexandrou & Amy Sowder Koch (eds.)